

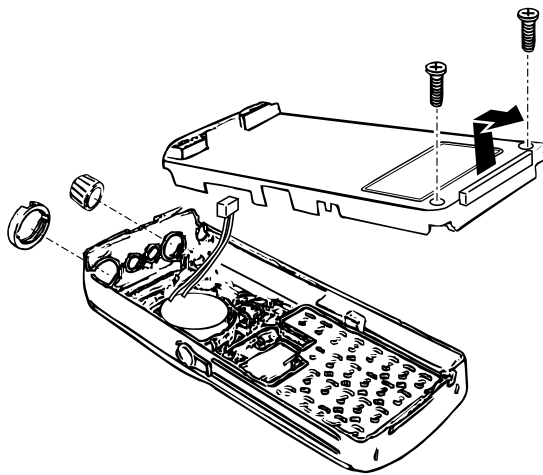
Thank you for purchasing the UT-111 TRUNKING UNIT.

Please read these instructions before installing and using this product.

IC-F3/F4 SERIES PC BOARD MODIFICATION

◆ IC-F3 and IC-F4 series instructions

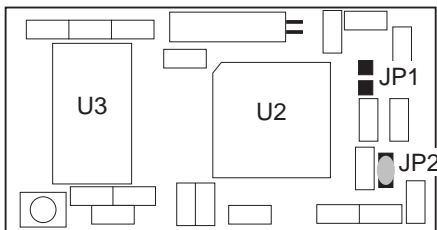
- ① Remove the battery pack and volume knob and unscrew the antenna connector screw.
- ② Unscrew the 2 screws, then remove the front panel as shown below.



- ③ Remove the shielding plate and 7 screws to show the bottom view of the MAIN unit.
- ④ Connect 2 points of the MAIN unit with a jumper wire as shown at right.
- ⑤ When using the UT-111 with IC-F3/S, connect JP2 by soldering as shown below.
- ⑥ Plug the UT-111 to J5 on the MAIN unit.
- ⑦ Reassemble the transceiver.

◆ UT-111 modification (IC-F3/S)

When using the UT-111 with IC-F3/S, connect JP2 by soldering as shown below.

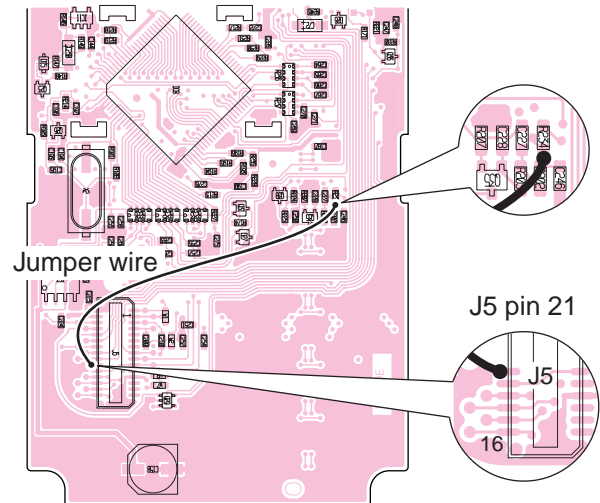


MODEL	JP2 JUMPER
IC-F3/S	Jumper
IC-F4/S	Open

◆ MAIN unit modification

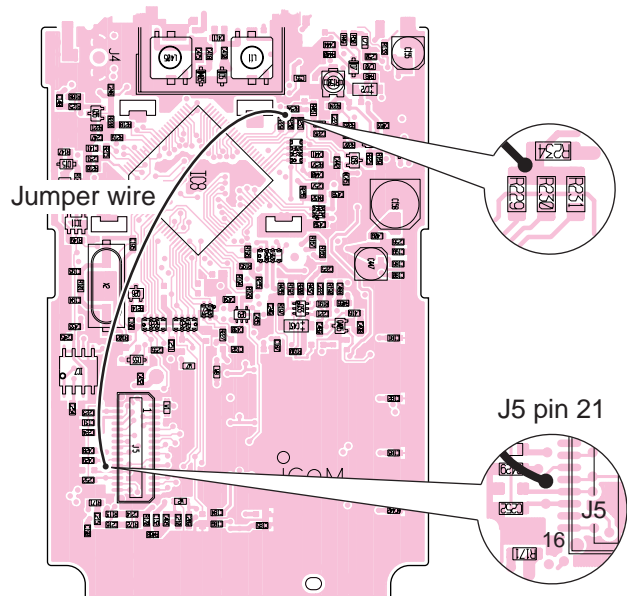
Connect 2 points with a jumper wire as shown below.

• IC-F3/S



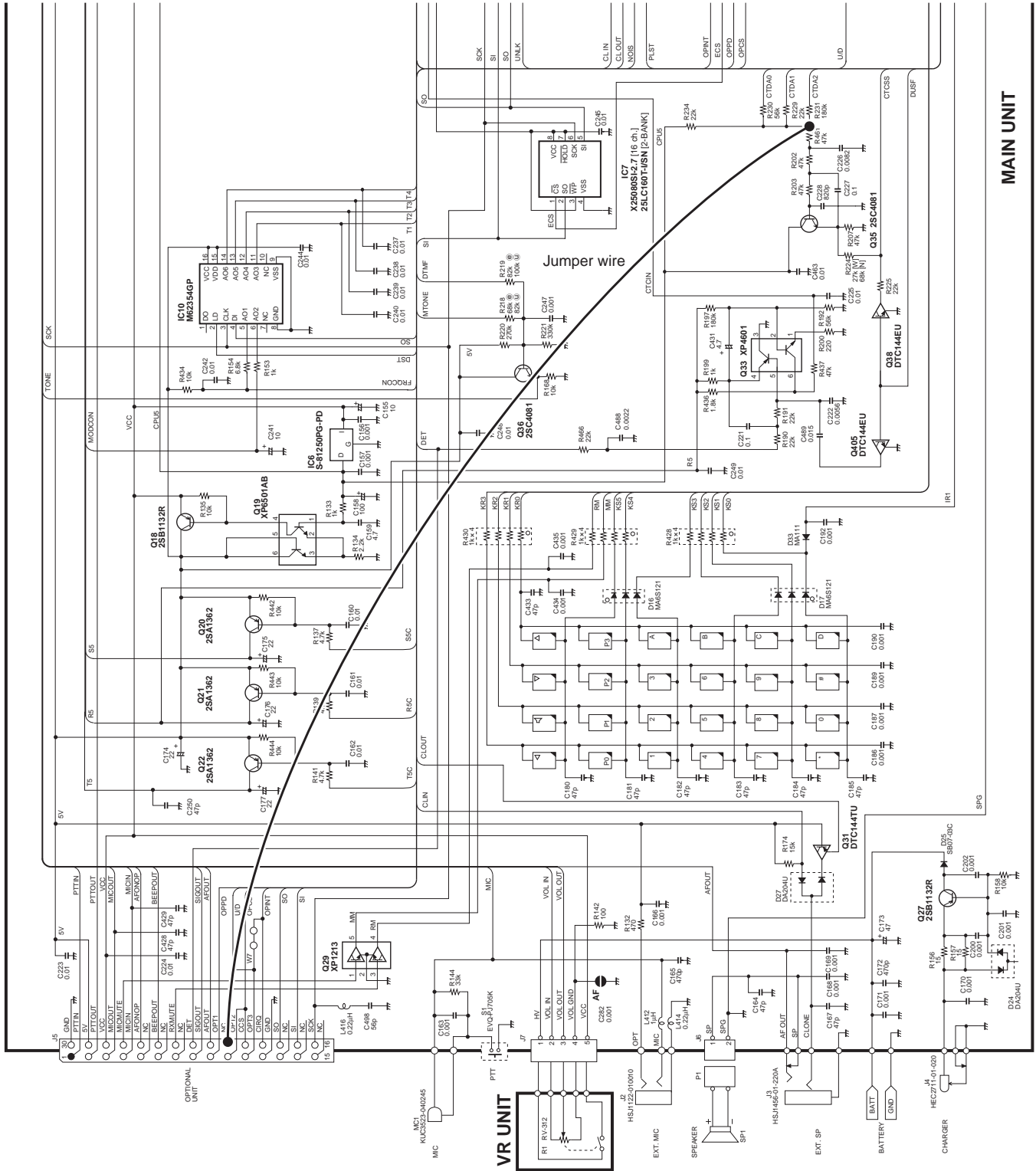
• IC-F4/S

/// This modification is not required when the transceiver's serial number is over 60000.



Modification part circuit diagram

This modification is not required when the transmitter's serial number is over 60000.



MAIN UNIT

IC-F300/F400 SERIES PC BOARD MODIFICATION

▨ The trunking unit may be installed to IC-F320S and IC-F420S, however, we do not recommend this due to channel capacity.

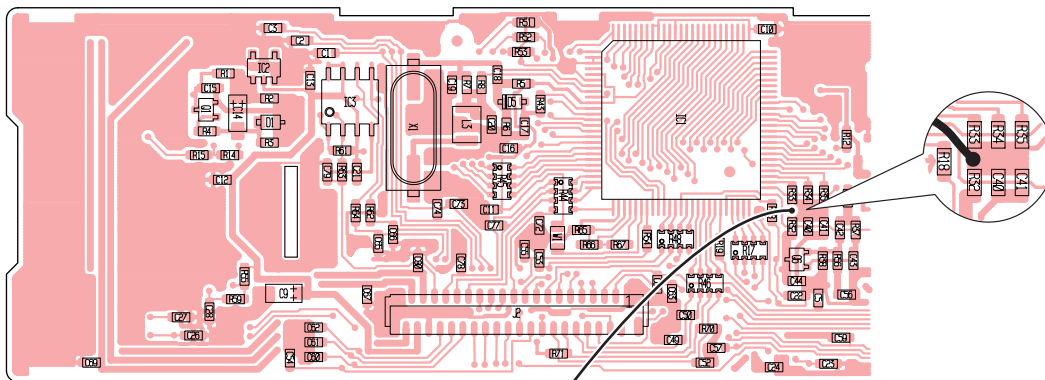
◇ IC-F300 and IC-F400 series instructions

- ① Turn power OFF, then disconnect the DC power cable.
- ② Unscrew the 4 screws, then remove the bottom cover.
- ③ Unscrew the 2 screws, then remove the front panel.
- ④ Unscrew the 3 screws and remove the flat cable, then remove the FRONT unit.
- ⑤ For the IC-F400 series transceiver, connect 2 points on the FRONT and MAIN units with a jumper wire as shown below.
 - ▨ This modification is not required when the transceiver's serial number is over 60000.
- ⑥ Connect JP2 on the UT-111 by soldering as shown on p. 5.
- ⑦ When using the UT-111 with IC-F410/S or IC-F420/S, MAIN unit modification is necessary.
- ⑧ Plug the UT-111 to J2 (IC-F300 series) or J4 (IC-F400 series) on the MAIN unit.
- ⑨ Reassemble the transceiver.

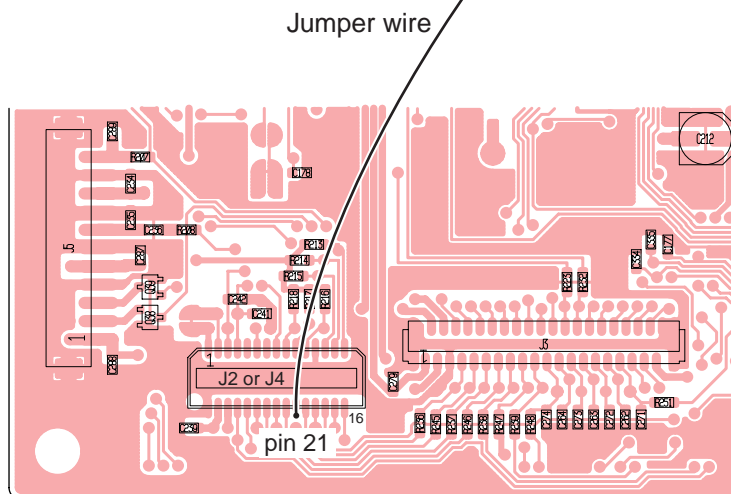
◇ FRONT and MAIN units modification

Connect 2 points with a jumper wire as shown below.

•FRONT unit



•MAIN unit



NOTE: The MAIN unit shows the IC-F400 series transceiver.

